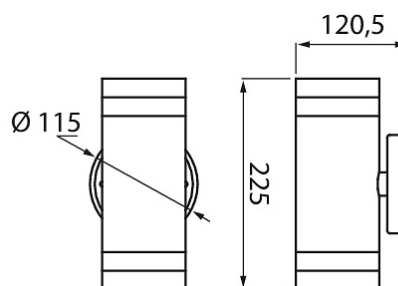




Alppila Double XL-W

Alppila luminaires are made of stainless steel, making them ideal for illuminating exterior walls. They are also suitable for indoor use, for example, in bathrooms. The XL-W model's housing is equipped with highlight bands that let light through.

- Stainless steel, hardened glass.
- White, RAL9010 and anthracite, RAL7016.
- Wall mount.
- Screw couplers, 3 x 2.5 mm², one cable inlet, not linkable.
- LED-lamp PAR16 GU10 max. 7W, not included.
- IP44.
- The ambient temperature is between -20 ... 25 °C, in line with recommendations for the lamp.



• In stock

Alppila Double XL-W

NO.	CODE
-----	------

- | | | |
|-----------|--------|--------------------------|
| • 4510238 | A5ABXL | IP44 2XGU10 GLC WH XL-W |
| • 4510239 | A5AAXL | IP44 2XGU10 GLC ANT XL-W |

