



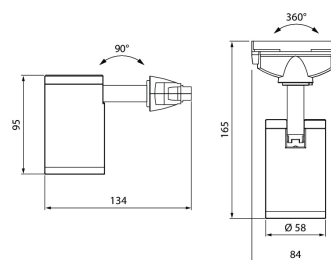
Beam

Beam is an elegant and timeless spotlight with an exchangeable PAR16 GU10 LED lamp. It can be mounted on a single- (1P) or three-phase rail (3P). Typical applications include public spaces, such as restaurants, cafés, hairdressers and other small business premises, and residential buildings.

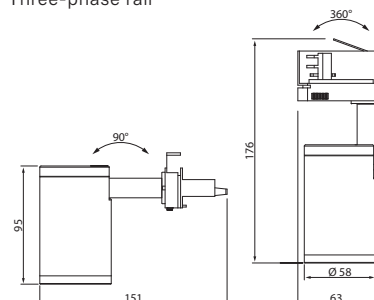
- Polycarbonate body.
- White, RAL 9016 and black, RAL 9005.
- Protection class I.
- Beam 3-P is equipped with a three-phase GA69 lighting track adapter. The luminaire can be mounted on Global Pro (former Nokia), XTS, XTTS and XTSC three-circuit tracks and Erco, Iguzzini, Unipro T3 and Eutrac tracks.
- Beam 1-P is equipped with a single-phase GP67M lighting track adapter. The luminaire can be mounted on Global Base 1 tracks. Can also be used with the Lytespan 1 and Lytespan LP tracks.
- IP20.
- Max. 7W LED. Lamp height max 57 mm.
- On/Off.
- Ambient temperature range 0 ... 25 °C.



Single-phase rail



Three-phase rail



• In stock

Beam 1-phase rail

NO.	CODE
-----	------

- | | |
|---------|-------------------------------|
| 4222762 | A2BEAB IP20 GU10 PAR16 WH 1-P |
| 4222761 | A2BEAA IP20 GU10 PAR16 BK 1-P |

Beam 3-phase rail

NO.	CODE
-----	------

- | | |
|---------|-------------------------------|
| 4222763 | A2BEAC IP20 GU10 PAR16 WH 3-P |
| 4222764 | A2BEAD IP20 GU10 PAR16 BK 3-P |

