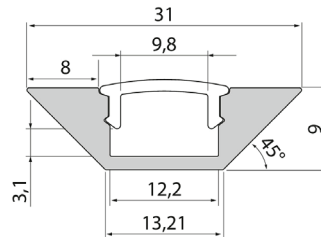




## Corner

The slimline Corner profile, designed for corners, can be mounted at the ceiling line or beneath cabinets to illuminate worktops. Use Apus, Coloris (IP20) or Ambiance (IP20) LED strips with the profiles. Surface mounting at an angle of 90°. The end pieces and brackets are sold separately.

- Anodised aluminium body, transparent or opal UV-protected polycarbonate diffuser.
- When used with the diffuser and end caps available as accessories, the profile meets the IP21 protection class requirements.
- The profile is available in 1 m and 2 m lengths and with a clear or opal diffuser.
- End caps and mounting brackets are available as accessories.
- Custom-made profile lengths (max. 6 m) are available on a project-specific basis.
- Check the compatibility table for our LED strips and profiles.



### • In stock

#### Corner

NO.	CODE
-----	------

- |         |        |                          |
|---------|--------|--------------------------|
| 4209053 | L2ALHA | Profile 1m AL PCC Corner |
| 4209054 | L2ALHB | Profile 1m AL PCO Corner |
| 4209055 | L2ALHC | Profile 2m AL PCC Corner |
| 4209056 | L2ALHD | Profile 2m AL PCO Corner |

#### Corner accessories

NO.	CODE
-----	------

- |         |        |                       |
|---------|--------|-----------------------|
| 4209057 | L2ALHE | End cap Corner        |
| 4209058 | L2ALHF | End cap w/hole Corner |
| 4209059 | L2ALHQ | Bracket Corner        |

