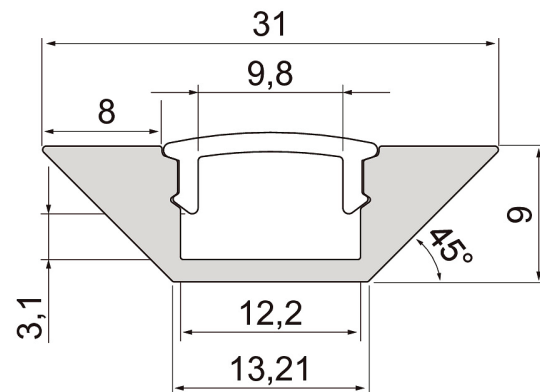




Corner

The slimline Corner profile, designed for corners, can be mounted at the ceiling line or beneath cabinets to illuminate worktops. Use Apus or Coloris (IP20) LED strips with the profiles. Surface mounting at an angle of 90°. The end pieces and brackets are sold separately.

- Anodised aluminium body, transparent or opal UV-protected polycarbonate diffuser.
- When used with the diffuser and end caps available as accessories, the profile meets the IP21 protection class requirements.
- The profile is available in 1 m and 2 m lengths and with a clear or opal diffuser.
- End caps and mounting brackets are available as accessories.
- Custom-made profile lengths (max. 6 m) are available on a project-specific basis.
- Check the compatibility table for our LED strips and profiles.



In stock

Corner

NO.	CODE
• 4209053	L2ALHA Profile 1m AL PCC Corner
• 4209054	L2ALHB Profile 1m AL PCO Corner
• 4209055	L2ALHC Profile 2m AL PCC Corner
• 4209056	L2ALHD Profile 2m AL PCO Corner

Corner Accessories

NO.	CODE
• 4209057	L2ALHE End cap Corner
• 4209058	L2ALHF End cap w/hole Corner
• 4209059	L2ALHQ Bracket Corner

