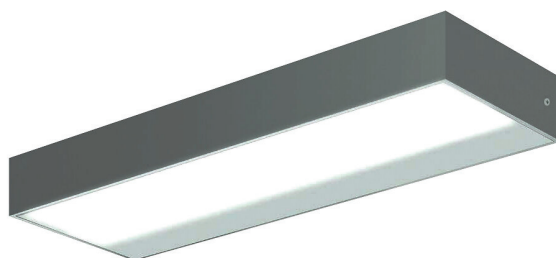


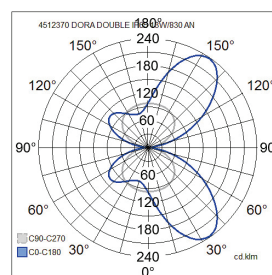
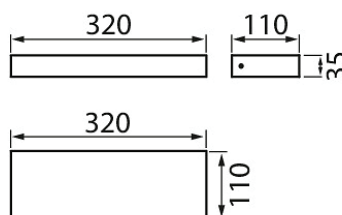


Dora Double

Dora Double is a wall luminaire designed for both indoor and outdoor use. This rectangular luminaire with a low structure and clean-lined design is suitable for a wide range of applications. The luminaire has two LED light sources: one an uplight, the other a downlight. The luminaire housing is coated with polyester paint that is resistant to corrosion and UV radiation, and the screws are made of stainless steel.



- Aluminium housing and frosted glass diffuser.
- Anthracite, silver, black and white.
- Protection class I.
- Surface mounting.
- Not linkable, 3 x 1.5 mm².
- Installation height: 0.5–4 m.
- Integrated LED 13 W / 820–1,720 lm.
- Colour temperatures 3,000 K and 4,000K. CRI > 80 / Ra > 80.
- IP65.
- IK07.
- On/off.
- Ambient temperature range -25 ... 25 °C
- Rated lifetime L70 50,000 h (Ta25°C).
- Power source service life 50,000 h.
- AN = anthracite, SI = silver, BK = black, WH = white.
- Also available in Corten colour on a project-specific basis.



By order

Dora Double 830

| NO. | CODE | W | LM |
|---------|------------------------------------|----|------|
| 4512370 | B5DOBD IP65 13W/830 GLFR AN Dora D | 13 | 1640 |
| 4512371 | B5DOBC IP65 13W/830 GLFR SI Dora D | 13 | 1640 |
| 4512372 | B5DOBB IP65 13W/830 GLFR BK Dora D | 13 | 1640 |
| 4512373 | B5DOBA IP65 13W/830 GLFR WH Dora D | 13 | 1640 |

Dora Double 840

| NO. | CODE | W | LM |
|---------|------------------------------------|----|------|
| 4512375 | B5DOBJ IP65 13W/840 GLFR AN Dora D | 13 | 1720 |
| 4512376 | B5DOBH IP65 13W/840 GLFR SI Dora D | 13 | 1720 |
| 4512377 | B5DOBG IP65 13W/840 GLFR BK Dora D | 13 | 1720 |
| 4512378 | B5DOBF IP65 13W/840 GLFR WH Dora D | 13 | 1720 |