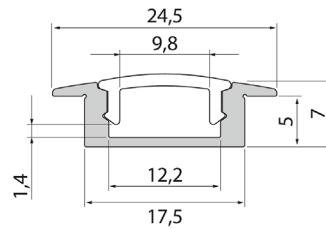




## Slimline 7 R

Slimline 7 R is a clean-lined, aluminium profile with a low structure for LED strips with a maximum width of 12 mm. Recessed mounting on a ceiling, on a wall, or in a groove beneath worktops. End pieces with or without wire opening are available as accessories. Read more about the other Slimline products.

- Anodised aluminium body, transparent or opal UV-protected polycarbonate diffuser.
- Suitable for use with IP20-protected LED strips with a maximum width of 12 mm. Without a diffuser, can be used with IP65-protected strips with a maximum width of 12 mm.
- When used with the diffuser and end caps available as accessories, the profile meets the IP21 protection class requirements.
- The profile is available in 1 m and 2 m lengths and with a clear or opal diffuser.
- End caps are available as accessories.
- Custom-made profile lengths (max. 6 m) are available on a project-specific basis.
- Check the compatibility table for our LED strips and profiles.



• In stock

### Slimline 7 R

NO.	CODE
-----	------

- |           |        |                       |
|-----------|--------|-----------------------|
| • 4209014 | L2ALBA | Profile 1m AL PCC 7 R |
| • 4209015 | L2ALBB | Profile 1m AL PCO 7 R |
| • 4209016 | L2ALBC | Profile 2m AL PCC 7 R |
| • 4209017 | L2ALBD | Profile 2m AL PCO 7 R |

### Slimline 7 R accessories

NO.	CODE
-----	------

- |           |        |                    |
|-----------|--------|--------------------|
| • 4209018 | L2ALBE | End cap 7 R        |
| • 4209019 | L2ALBF | End cap w/hole 7 R |
| • 4289831 | L2ALJA | Linear connector 7 |