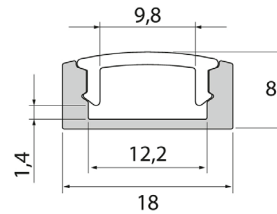
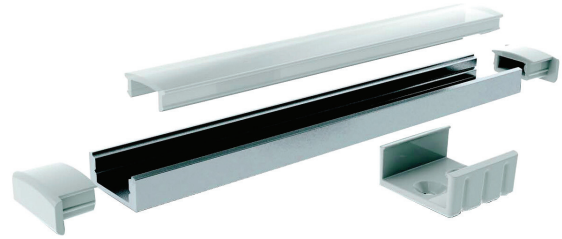




Slimline 7

Slimline 7 is a clean-lined aluminium profile with a low structure for LED strips with a maximum width of 12 mm. Surface mounting on a ceiling, on a wall, or beneath worktops. Brackets and end pieces with or without a wire opening are available as accessories. An extension piece is also available for easier installation. Read more about the other Slimline products.



- Anodised aluminium body, transparent or opal UV-protected polycarbonate diffuser.
- Suitable for use with IP20-protected LED strips with a maximum width of 12 mm. Without a diffuser, can be used with IP65-protected strips with a maximum width of 12 mm.
- When used with the diffuser and end caps available as accessories, the profile meets the IP21 protection class requirements.
- The profile is available in 1 m and 2 m lengths and with a clear or opal diffuser.
- End caps and mounting brackets are available as accessories.
- Customised profile lengths (max. 6 m) are available on a project-specific basis.
- Check the compatibility table for our LED strips and profiles.

• In stock

Slimline 7

NO.	CODE	
• 4209000	L2ALAA	Profile 1m AL PCC 7
• 4209001	L2ALAB	Profile 1m AL PCO 7
• 4209004	L2ALAE	Profile 2m AL PCC 7
• 4209005	L2ALAF	Profile 2m AL PCO 7

Slimline 7 accessories

NO.	CODE	
• 4209008	L2ALAJ	End cap 7
• 4209009	L2ALAK	End cap w/hole 7
• 4209066	L2ALJQ	Bracket 7
• 4289831	L2ALJA	Linear connector 7