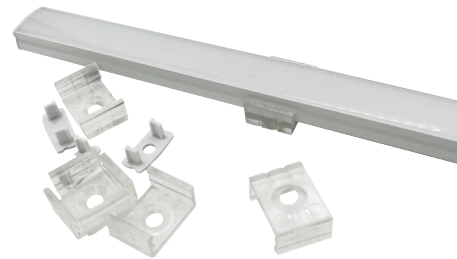
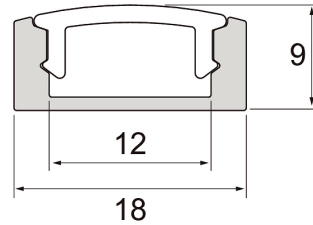




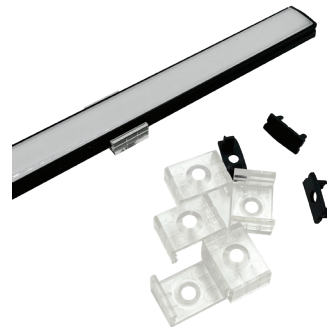
Slimline Aluminum profile kit 2 m

Slimline Aluminum Profile Kit 2 m is designed for easy and versatile installation of led strips. The cleanly designed profile has a low structure and is suitable for 12 mm wide led strips. Surface installation on the ceiling, wall or, for example, on the lower surfaces of worktops. The kit also contains two ends with a hole and two closed ends and six mounting brackets, which enable two separate fixtures. Three color options.

- Anodised aluminium body, opal UV-protected polycarbonate diffuser.
- Suitable for use with LED strips with a maximum width of 12 mm and maximum height of 6 mm.
- The profile length is 2 m and it comes with an opal diffuser, with two end caps with the hole and two end caps without the hole and with six mounting brackets included.
- Check the compatibility table for our LED strips and profiles.



Slimline kit contains ends and mounting brackets



• In stock

Slimline Aluminum profile kit 2 m

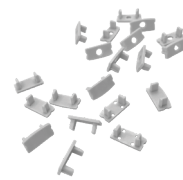
NO.	CODE	
• 4146932	A1COBP	Aluminum profile kit 2m PCO
• 4147022	A1SLIA	Aluminum profile kit 2m PCO WH
• 4147023	A1SLIB	Aluminum profile kit 2m PCO BK

Slimline kit accessories

NO.	CODE	
• 4147024	A1SLIC	Aluminum profile kit bracket 10pcs
• 4147025	A1SLID	Aluminum profile kit end cap 10+10



4147024



4147025

IP20

IP67

ta
-15 °C

Dimmable drivers 24V

New dimmable and Dali drivers are now available. The Dim IP20 version comes with a two-meter power cable and a Euro plug. DIM versions operate with leading and trailing edge control. Dali versions operate via Dali control or direct push-button control. IP67 versions can also be used outdoors.

• In stock

Dimmable drivers 24V Dim

NO.	CODE
• 4016042	A0TAAA CV-Driver 24V 25W IP20 DIM
• 4016043	A0TAAB CV-Driver 24V 50W IP20 DIM
• 4016044	A0TAAC CV-Driver 24V 100W IP20 DIM
• 4016045	A0TAAD CV-Driver 24V 150W IP20 DIM
• 4016048	A0TAAG CV-Driver 24V 100W IP67 DIM
• 4016049	A0TAAH CV-Driver 24V 150W IP67 DIM

DALI drivers 24V Dali

NO.	CODE
• 4016046	A0TAAE CV-Driver 24V 75W IP20 DA2
• 4016047	A0TAAF CV-Driver 24V 150W IP20 DA2

